

WATER-WISE GARDEN PLAN FOR AN OAK WOODLAND

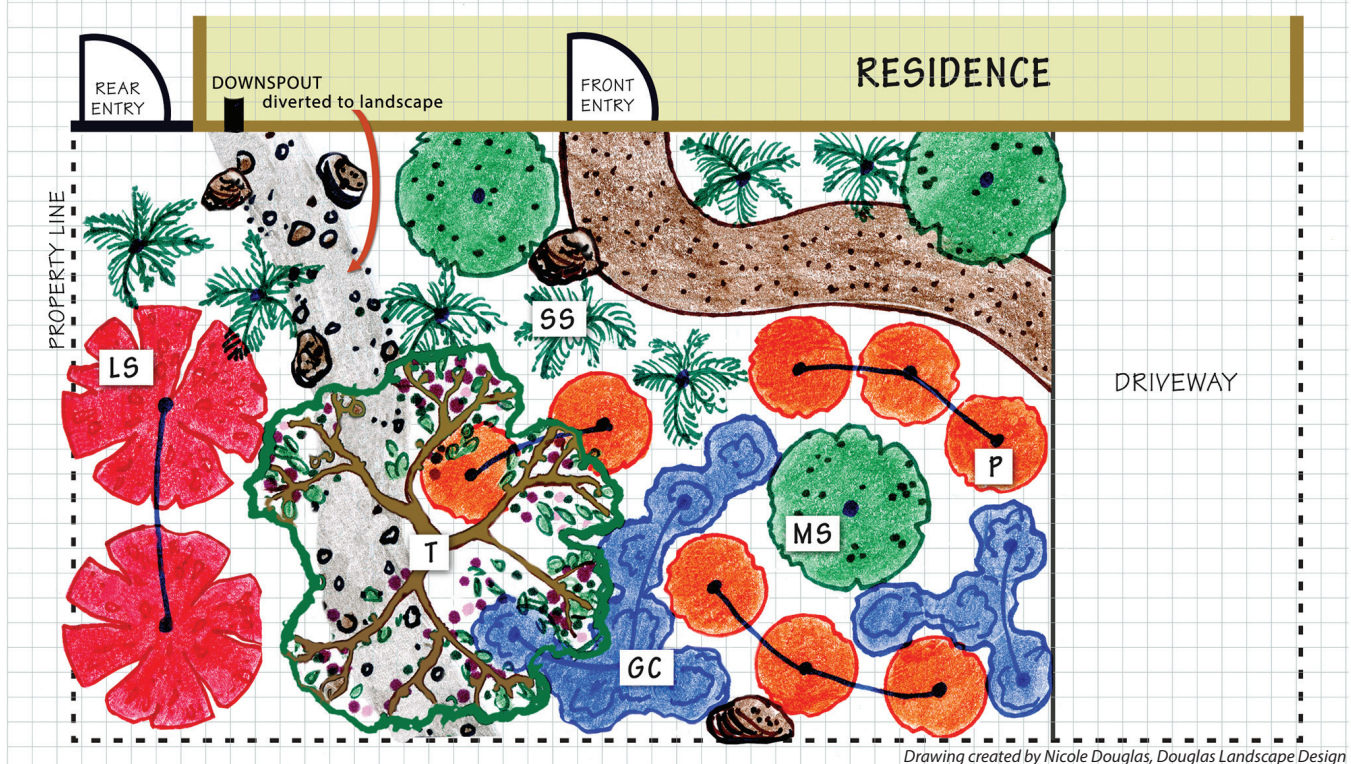


Before your home or neighborhood was built a native plant community existed there. Gardens that incorporate these native plants thrive without fertilizer, pesticides and little to no water because they are naturally adapted to the area and our summer-dry climate. These diverse and beautiful plants also attract and benefit native birds, butterflies and other wildlife.






Is your property in an Oak Woodland?

If your garden is spotted with oak trees with open spaces in between, choose drought tolerant plants from the oak woodland plant community that tolerate sunny days and dry shade.

Sample Landscape Plan SCALE: 1 square = 1 foot



Oak Woodland Plant Options - Choose from:

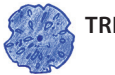
-  **TREES OR LARGE SHRUBS (T or LS on plan) more than 10' tall and wide:**
 - Heteromeles arbutifolia* – toyon
 - Ceanothus spp.* – California lilac
 - Rhamnus californica* – coffeeberry
-  **MEDIUM SHRUBS (MS on plan) 4-8' tall:**
 - Arctostaphylos densiflora* 'Howard McMinn'- vine hill manzanita, 5-7' x 6-10'
 - Carpenteria californica* – bush anemone, 6' x 4'
 - Grevillea lanigera spp.* – woolly grevillea, 3-6' x 6-10' (NON NATIVE)
-  **SMALL SHRUBS (SS on plan) 2-4' tall:**
 - Correa pulchella spp.* – Australian fuschia, 2-3' x 4-5' (NOT NATIVE)
 - Mimulus aurantiacus* – sticky monkeyflower, 3-4' x 3-4'
 - Salvia clevelandii* – Cleveland sage, 3-5' x 3-5'
-  **PERENNIALS (P on plan):**
 - Iris douglasiana* - Douglas' iris, 1-2' x 2-3'
 - Penstemon heterophyllis spp.* – foothill penstemon, 1-2' x 2-3'
 - Achillea millefolium* – common yarrow, 1-2' x 2-4'
-  **GRASSES AND GROUNDCOVERS (GC on plan) less than 1-2' and spreading:**
 - Festuca californica* – California fescue, 2-3' x 2'
 - Muhlenbergia rigens* – deer grass, 3-4' x 3'
 - Salvia spathacea* – hummingbird sage
 - Salvia sonomensis* – creeping sage

See more plant options at www.green-gardener.org

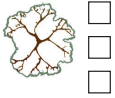


Instructions for Creating your own Oak Woodland Garden Design

1. Measure across your garden from property line to property line. Using the drawing below or a sheet of graph paper, draw the outline of your garden using the scale 1 square = 1 foot. Then draw in pathways, sidewalks, and patios to scale.
2. Choose 2-3 plants from each category on the sample landsape plan provided, or **view links to even more plant options at www.green-gardener.org**.
3. Create your design! Using the sample landscape plan provided as a guide, draw in and label the plants you have chosen. Make sure that the width of each plant at maturity is drawn to scale so that your landscape will not be overcrowded!



TREES OR LARGE SHRUBS more than 10' tall:



PERENNIALS:



MEDIUM SHRUBS 4-8' tall:



GRASSES AND GROUNDCOVER less than 1-2' and spreading 2-4':



SMALL SHRUBS 2-4' tall:



OTHER PLANTS/NOTES:



Funding for this project has been provided in full or in part through an agreement with the State Water Resources Control Board.



AND

