

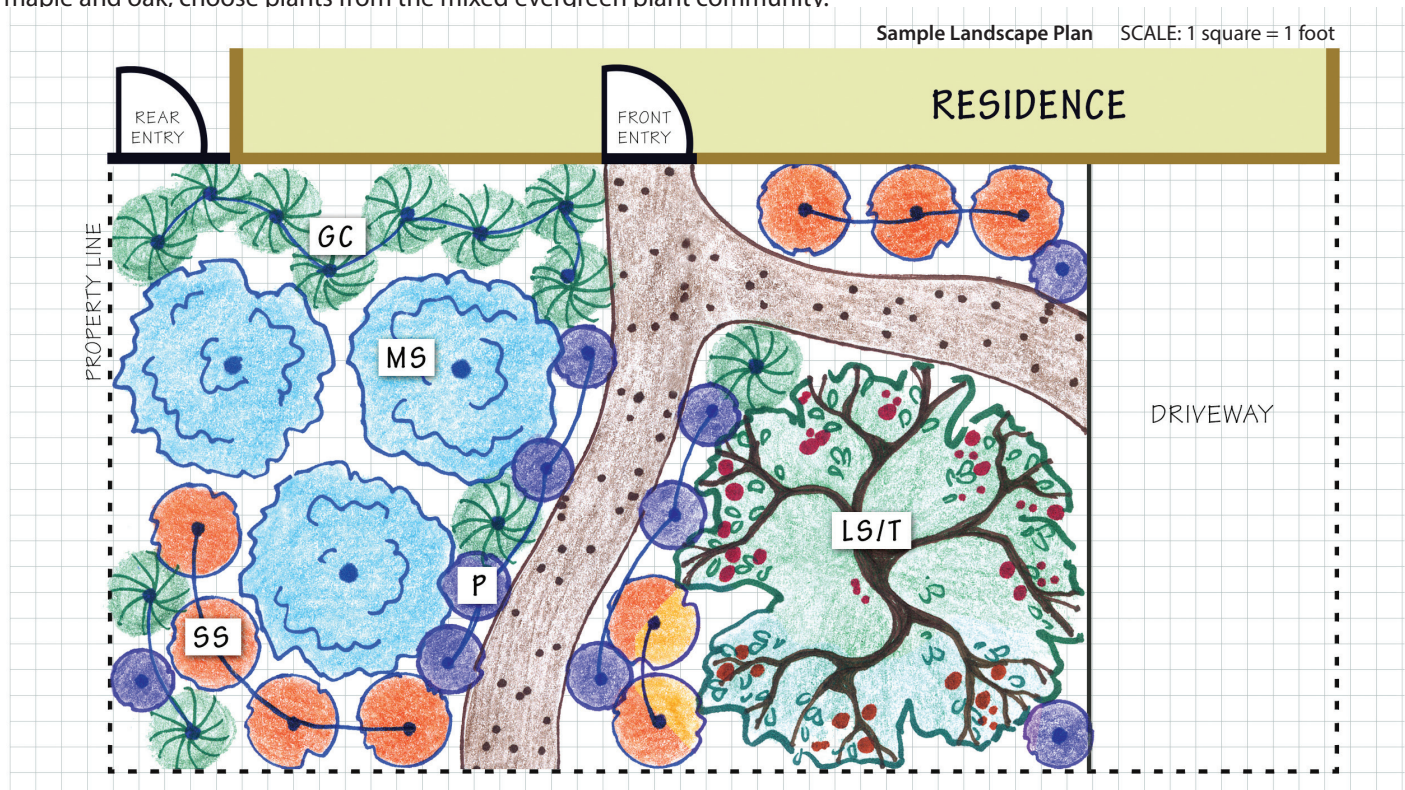
WATER-WISE GARDEN PLAN FOR A MIXED EVERGREEN FOREST



Before your home or neighborhood was built a native plant community existed there. Gardens that incorporate these native plants thrive without fertilizer, pesticides and little to no water because they are naturally adapted to the area and our summer-dry climate. These diverse and beautiful plants also attract and benefit native birds, butterflies and other wildlife.

Is Your Property in a Mixed Evergreen Forest Plant Community?

If your garden contains both evergreen trees such as pines, madrone, and California bay along with deciduous trees such as maple and oak, choose plants from the mixed evergreen plant community.



Drawing created by Nicole Douglas, Douglas Landscape Design

Mixed Evergreen Plant Options - Choose from:



TREES OR LARGE SHRUBS (LS/T on plan) more than 10' tall and wide:

- Cercis occidentalis* - western redbud
- Arbutus "Marina"* - Marina madrone
- Garrya elliptica* - silk tassel



MEDIUM SHRUBS (MS on plan) 4-8' tall:

- Ribes sanguineum* - pink flowering current, 5-12' x 5-12'
- Ribes viburnifolium* - evergreen currant, 3-6' x 4-12'
- Ceanothus spp.* - Several varieties, including Big Sur, Carmel mountain, and California mountain lilac



SMALL SHRUBS (SS on plan) 2-4' tall:

- Mimulus aurantiacus spp.* - sticky monkeyflower, 3-4' x 3-4'
- Correa pulchella spp.* - Australian fuschia (NON NATIVE), 2-3' x 4-5'
- Arctostaphylos hookeri*, - Monterey manzanita, 2-4' x 4'



PERENNIALS (P on plan):

- Monardella villosa* - coyote mint, 1-2' x 12-18"
- Polystichum munitum* - western sword fern, 3-5' x 3-4'
- Iris douglasiana* and hybrids- douglas iris, 1-2' x 2-4'



GRASSES AND GROUNDCOVER (GC on plan) less than 1-2' and spreading:

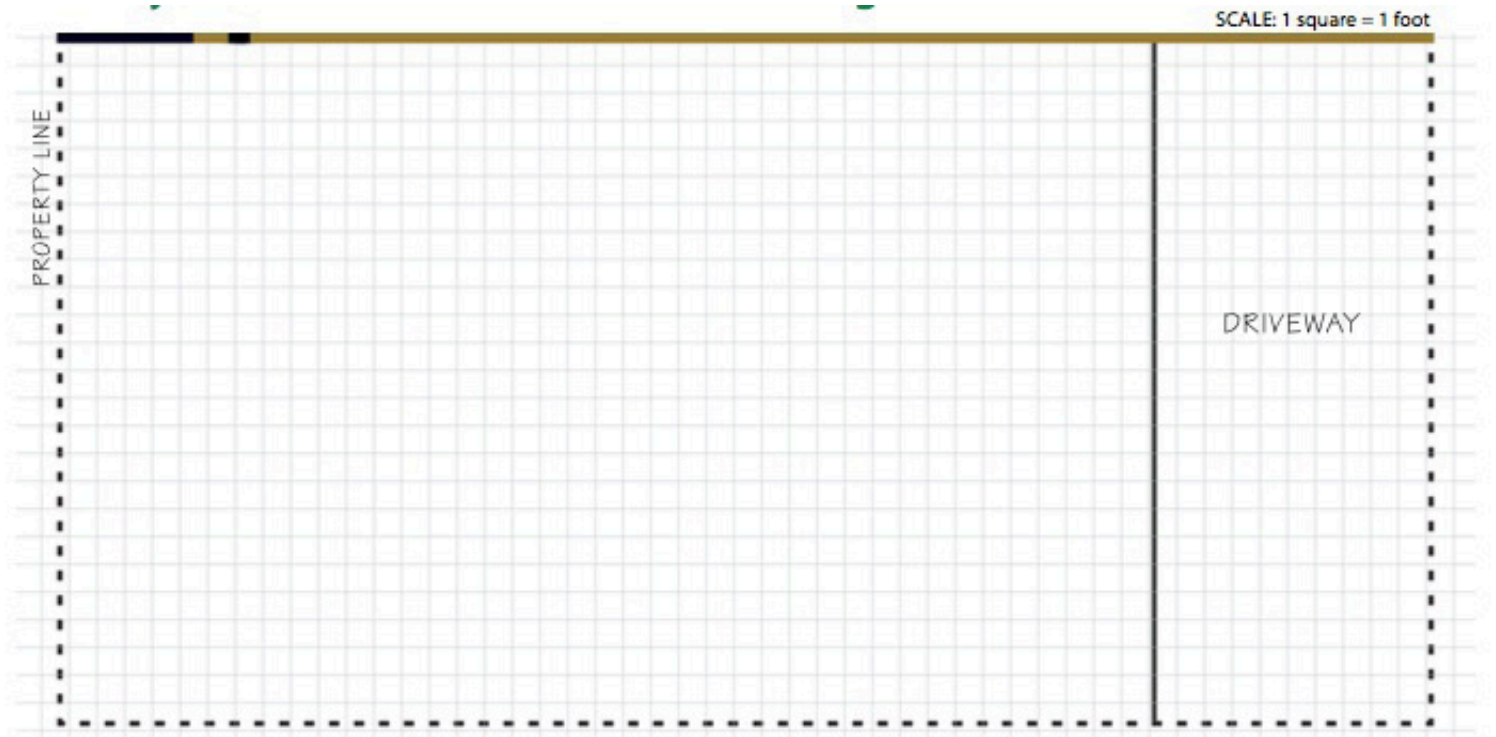
- Festuca californica*, California fescue
- Arctostaphylos uva-ursi* or *edmundsii* - manzanita
- Fragaria californica* - woodland strawberry



See more plant options at
www.green-gardener.org

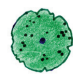



Instructions for Creating your own Mixed Evergreen Garden Design


1. Measure across your garden from property line to property line. Using the drawing below or a sheet of graph paper, draw the outline of your garden using the scale 1 square = 1 foot. Then draw in pathways, sidewalks, and patios to scale.
2. Choose 2-3 plants from each category on the sample landsape plan provided, or **view links to even more plant options at www.green-gardener.org**.
3. Create your design! Using the sample landscape plan provided as a guide, draw in and label the plants you have chosen. Make sure that the width of each plant at maturity is drawn to scale so that your landscape will not be overcrowded!




-  **TREES OR LARGE SHRUBS more than 10' tall:**
- - 
 -

-  **MEDIUM SHRUBS 4-8' tall:**
- -
 -

-  **SMALL SHRUBS 2-4' tall:**
- -
 -

-  **PERENNIALS:**
- -
 -

-  **GRASSES AND GROUNDCOVER less than 1-2' and spreading 2-4':**
- -
 -

- OTHER PLANTS/NOTES:**
- -
 -

Funding for this project has been provided in full or in part through an agreement with the State Water Resources Control Board.



AND

