

WATER-WISE GARDEN PLAN FOR COASTAL TERRACES, GRASSLAND AND CHAPARRAL

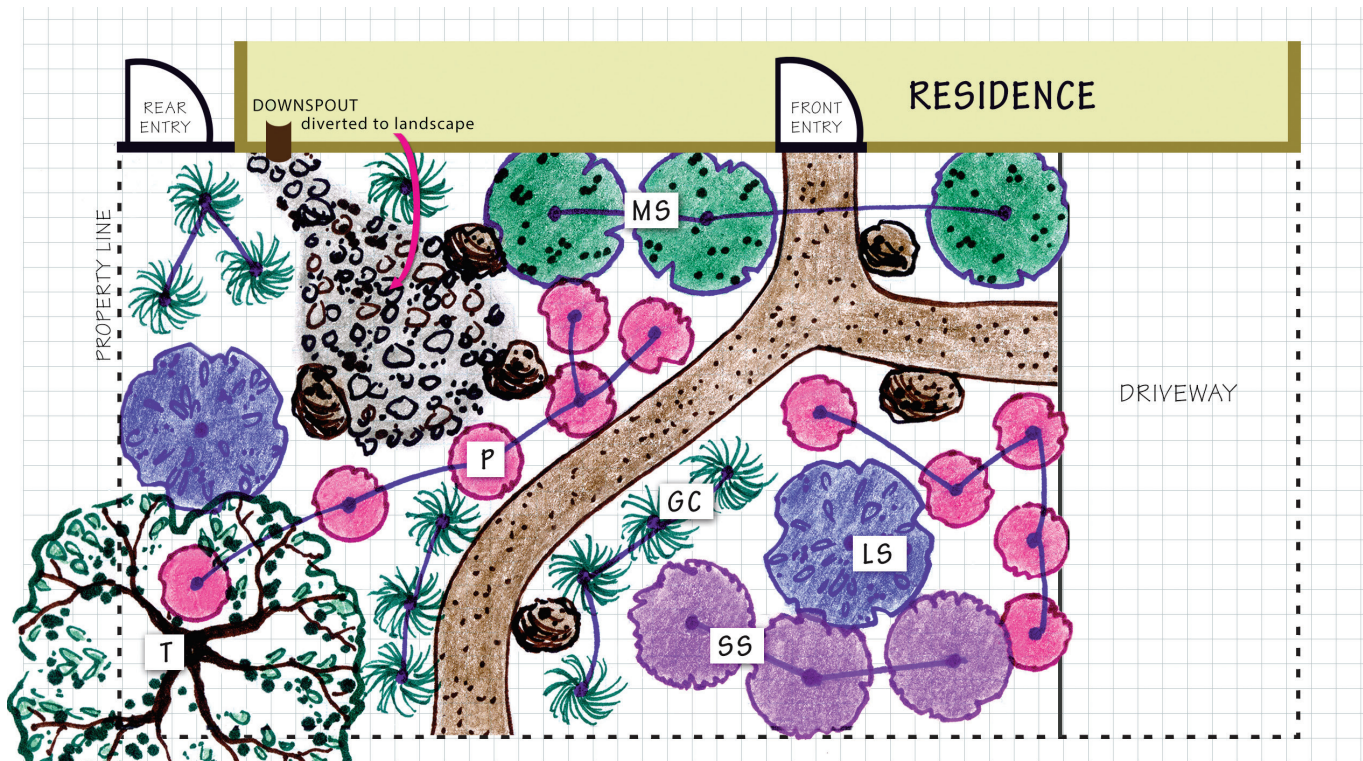


Before your home or neighborhood was built a native plant community existed there. Gardens that incorporate these native plants thrive without fertilizer, pesticides and little to no water because they are naturally adapted to the area and our summer-dry climate. These diverse and beautiful plants also attract and benefit native birds, butterflies and other wildlife.

Is Your Property in a Coastal Terrace Plant Community?

If your garden is flat, sunny, and has deep soils, choose deep-rooted meadow grasses and incorporate other shrubs, perennials and wildflowers for spring and summer color.

Sample Landscape Plan SCALE: 1 square = 1 foot



Drawing created by Nicole Douglas, Douglas Landscape Design

Coastal Terraces, Grassland & Chaparral Plant Options - Choose from:



TREES OR LARGE SHRUBS (T or LS on plan) more than 10' tall:



- ☐ *Ceanothus* spp. – California lilac
- ☐ *Arctostaphylos* spp. – manzanita
- ☐ *Fremontodendron* spp. – flannelbush



MEDIUM SHRUBS (MS on plan) 4-8' tall:

- ☐ *Erigonum giganteum* – St Catherine's lace, 4-6' (h) x 4-8' (w)
- ☐ *Salvia clevelandii* – Cleveland sage, 3-5' (h) x 3-5' (w)
- ☐ *Grevillea lanigera* – woolly grevillea, 3-6' (h) x 6-10' (w) (NON NATIVE)



SMALL SHRUBS (SS on plan) 2-4' tall:

- ☐ *Artemisia pycnocephala* – sandhill sage, 2' x 3'
- ☐ *Mimulus aurantiacus* – sticky monkeyflower, 3-4' x 3-4'
- ☐ *Rosmarinus officinalis*, – 'Prostratus' (NOT NATIVE), 2' x 4-8'



PERENNIALS (P on plan):

- ☐ *Penstemon heterophyllus* – blue foothill penstemon, 1-2' x 2-3'
- ☐ *Erigonum grande* var. *rubescens* – rosy buckwheat, 1-2' x 2-3'
- ☐ *Epilobium californica* – California fuchsia, 1-2' x 4'



GRASSES AND GROUNDCOVER (GC on plan) less than 1-2' and spreading 2-4':

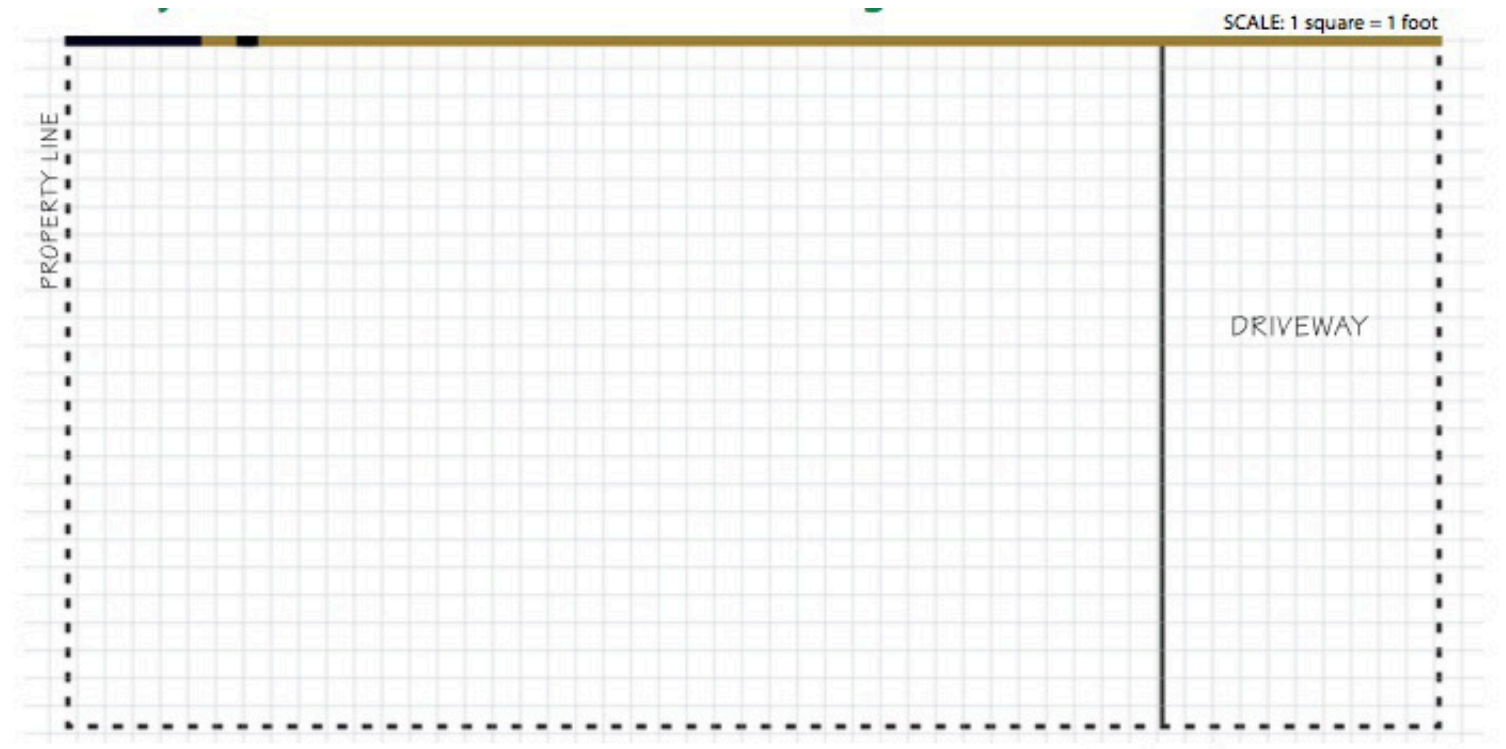
- ☐ *Festuca idahoensis* or *rubra* – fescue
- ☐ *Salvia sonomensis* – Sonoma sage
- ☐ *Achillea millefolium* – common yarrow

See more plant options at
www.green-gardener.org



Instructions for Creating your own Coastal Terrace Garden Design

1. Measure across your garden from property line to property line. Using the drawing below or a sheet of graph paper, draw the outline of your garden using the scale 1 square = 1 foot. Then draw in pathways, sidewalks, and patios to scale.
2. Choose 2-3 plants from each category on the sample landsape plan provided, or **view links to even more plant options at www.green-gardener.org.**
3. Create your design! Using the sample landscape plan provided as a guide, draw in and label the plants you have chosen. Make sure that the width of each plant at maturity is drawn to scale so that your landscape will not be overcrowded!



TREES OR LARGE SHRUBS more than 10' tall:


☐
☐
☐


MEDIUM SHRUBS 4-8' tall:

☐
☐
☐


SMALL SHRUBS 2-4' tall:

☐
☐
☐


PERENNIALS :

☐
☐
☐


GRASSES AND GROUNDCOVER less than 1-2' and spreading 2-4':

☐
☐
☐

OTHER PLANTS/NOTES:

☐
☐
☐

Funding for this project has been provided in full or in part through an agreement with the State Water Resources Control Board.



AND

